



A Woodland Wake for Midsummer

JulieMc and friends

Visual Guide



Join us in the willow circle we call This Woven O



<https://festival.org/gdif/whats-on/a-woodland-wake-for-midsummer/>

What to Expect



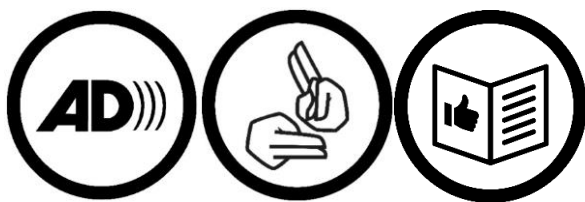
Who is it for?

This show is made for adults. Children are welcome with their grown-ups.



Length of show:

20 min



Access:

BSL Interpreted

Creative Audio Description



Priority space and seating for:

- Wheelchair users
- Anyone who needs a seat.
- Companion
- Companions





Music and Sound:

The music is played live on wooden instruments



Content:

Themes of grief and loss of loved ones.



You are welcome to:

- Move around – just not on stage.
- Make noise
- Join and leave at any time



Volunteers:

Friendly volunteers are there to help. They will be wearing pink t-shirts.



What is the show about



Inside This Woven O



Gathered inside the trees around us



To think about our loves and losses



Using words, poetry and song



Celebrate those we've said goodbye to.



What happens in the show



The show starts with a call and response.



The storytellers and music-makers say hello.



They will share herbs to smell.



The storyteller reads us poems and blessings



Together we think about people we've loved





And celebrate our lives together with music



In the trees around us

Instruments in the show



Flute



Fiddle





Bodhran

Storytellers and Music Makers



Omikemi



Charlie Folorunsho





Ali Gordon



Christian Vaughan-Spruce



JulieMc



Sheena Valley





Teresa Maguire

Find out more



Contact:

Email: access@festival.org

Call or text: 07899 893 935



An Invitation to join in

27, 28 AUG 1PM, 2.30PM + 4PM

Activities inspired by the themes of the show

